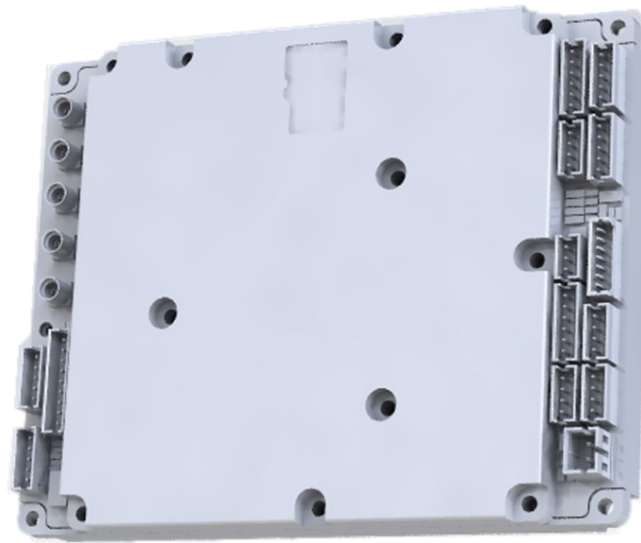


S-MESH™ Core Board

Product Datasheet BD-C303



Sovereign Systems



RF Specifications

Waveform	COFDM
Frequency Range	
BD-C303-007045	70 - 450MHz
BD-C303-046250	460 - 2500MHz
BD-C303-475505	4750 - 5050MHz
Carrier Bandwidth	1.25 / 2.5 / 5 / 10 / 20 MHz
Max Throughput	56Mbps
RF Output	-10dBm
Carrier Modulation	QPSK / 16QAM / 64QAM / 256QAM
FEC Rate	FEC 1/3, 2/3
Receive Sensitivity	-100dBm @ 5MHz
RF Interface	2x Tx, 2x Rx, 1x



Power

Power Input	7 to 14.5Vdc
Power Consumption (Max)	6W



Physical Specifications

Dimensions (L x W x H)	90 x 70 x 13.3mm
Weight	~120g



Environment

Operating Temperature	-40 to 65°C
-----------------------	-------------



Streaming

Streaming Protocol	UDP, RTSP, RTP
--------------------	----------------



Networking

Ethernet	10 / 100Mbps
WIFI	2.4 / 5.0GHz



Audio

Audio Codec	Adaptive Multi-Rate (AMR)
Data Bitrate	4.8Kbps



I/O

RS232, RS485, TTL, SPI, GPIO, Ethernet, USB



Security

Data Encryption	DES / AES 128** / AES 256**
-----------------	-----------------------------

* T.B.C. / Under Development
 ** License Required

For more information on Licenses and Features, please contact your local salesperson.